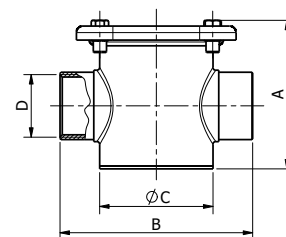
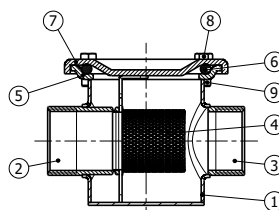


# LINIA / 2.0

**Filtri in linea /**  
In-line filters



**Modello / Model**  
**LINIA 2.0**

**Materiale / Material**  
Aisi 316

**DN**  
15 – 40

**PN**  
16

## Componenti e materiali / Components and materials

<b>1</b>	<b>Corpo / Body</b>	Acciaio Inox / SS Aisi 316
<b>2</b>	<b>Manicotto lato mandata / Outlet end</b>	Acciaio Inox / SS Aisi 316
<b>3</b>	<b>Manicotto lato aspirazione / Inlet end</b>	Acciaio Inox / SS Aisi 316
<b>4</b>	<b>Filtro / Filter</b>	Acciaio Inox / SS Aisi 316
<b>5</b>	<b>Base coperchio / Cover base</b>	Acciaio Inox / SS Aisi 316
<b>6</b>	<b>Anello OR / O-ring</b>	FPM
<b>7</b>	<b>Coperchio / Cover</b>	Acciaio Inox / SS Aisi 316
<b>8</b>	<b>Vite TE M5 / Screw TE M5</b>	Acciaio Inox / SS Aisi 304
<b>9</b>	<b>Rivetto / Rivet</b>	Acciaio Inox / SS Aisi 304

## Dimensioni e pesi / Dimensions and weights

Codice Code	Misura Size	DN	PN	Peso in gr. Weight in gr.	Dimensioni in mm Dimensions in mm			
					A	B	C	D
900815	1/2"	15	16	260	65	78	42,4	1/2" F
900816	3/4"	20	16	470	72	84	48,3	3/4" F
900817	1"	25	16	590	79	105	60,3	1" F
900818	1" 1/4	32	16	880	90	116	76,1	1" 1/4 F
900819	1" 1/2	40	16	1180	102	137	88,9	1" 1/2 F