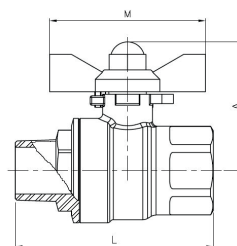
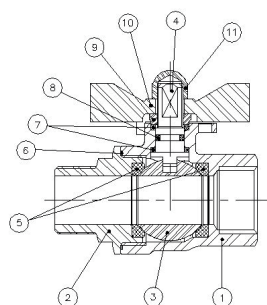


H2010

**Valvole a sfera a 2 pezzi
a passaggio totale con
maniglia a farfalla /**
Full bore ball valves 2
pieces with butterfly handle



Modello / Model
H2010

Materiale / Material
Aisi 316

Tenuta / Seal
PTFE + 15% FV / GF

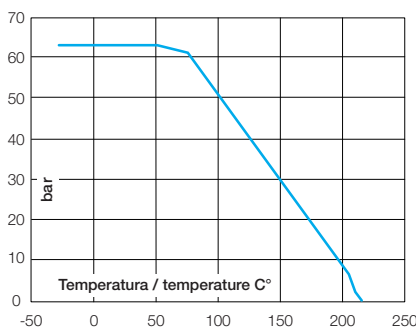
DN
8 – 25

PN
63

Caratteristiche tecniche / Construction features

- **Conessioni filettate secondo** / Threaded ends according to UNI EN 10226-1
- **Pressione nominale di esercizio** / Nominal working pressure 63 bar
- **Temperatura di esercizio** / Working temperature -25°C – +180°C
- **Albero anti-espulsione** / Blow-out proof stem

Diagramma pressione temperatura / Pressure temperature diagram



Componenti e materiali / Components and materials

1	Corpo / Body	Acciaio Inox / SS 1.4408
2	Coperchio / Cap	Acciaio Inox / SS 1.4408
3	Sfera / Ball	Acciaio Inox / SS 1.4408
4	Albero / Stem	Acciaio Inox Aisi 316 / SS Aisi 316
5	Tenuta sfera / Ball Seat	PTFE + 15% F.V. / G.F.
6	Guarnizione / Gasket	PTFE
7	Rondella / Trust Washer	PTFE
8	Anello OR / O-ring	FPM
9	Pacco albero / Stem packing	Acciaio Inox Aisi 304 / SS Aisi 304
10	Maniglia a farfalla / Butterfly Handle	Acciaio Inox Aisi 304 / SS Aisi 304
11	Dado / Nut	Acciaio Inox Aisi 304 / SS Aisi 304

Dimensioni e pesi / Dimensions and weights

Codice Code	Misura Size	DN	PN	Peso in gr. Weight in gr.	KV m³/h	Dimensioni in mm Dimensions in mm		
						A	L	M
H201002	1/4"	8	63	200	6	32	56	50
H201003	3/8"	10	63	183	10	32	56	50
H201004	1/2"	15	63	224	24	41	63	50
H201005	3/4"	20	63	464	43	58	79	63
H201006	1"	25	63	635	83	61	90	63