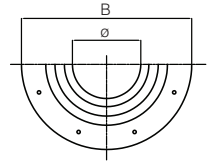
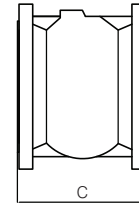
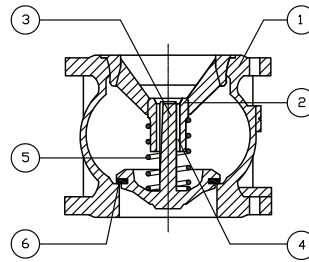
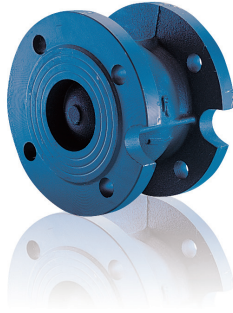


H2450

**Valvole di ritegno
flangiate in ghisa /**
Cast iron flanged
check valves



Modello / Model
H2450

Materiale / Material
Ghisa-ottone / Cast iron-brass

Tenuta / Seal
NBR

DN
50 – 250

PN
16

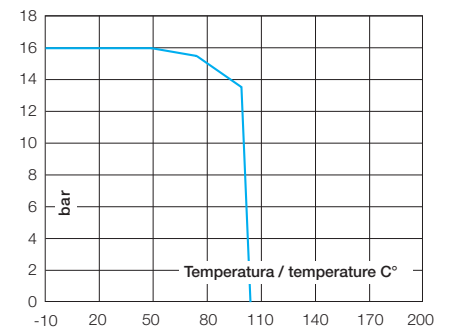
Caratteristiche tecniche / Construction features

- **Montaggio tra flange secondo** / Assembly between flanges according to DIN 2501 PN 16
- **Guida e otturatore** / Stem and guide fino a/until DN 100 ottone / brass da/from GG25 DN 125 a/to DN 250 ghisa / cast iron
- **Pressione nominale di esercizio** / Nominal working pressure 16 bar
- **Temperatura di esercizio** / Working temperature -10°C – +100°C
- **Chiusura silenziosa** / Silent closing
- **Installazione orizzontale o verticale** / Installation horizontal or vertical flow

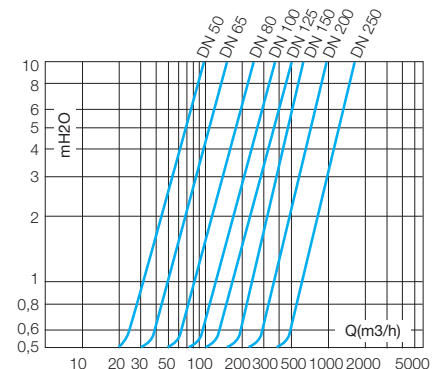
Componenti e materiali / Components and materials

1	Corpo / Body	Ghisa GG-25 / Cast Iron GG-25
	Trattamento superficiale / Surface treatment	Verniciatura / Painting
2	Guida / Guide	Ottone o ghisa / Brass or cast iron
	Trattamento superficiale / Surface treatment	Nichelatura / Nickel plated
3	Otturatore / Guiding stem	Ottone o ghisa / Brass or cast iron
	Trattamento superficiale / Surface treatment	Nichelatura / Nickel plated
4	Boccola / Bushing	Ottone / Brass
5	Molla / Spring	Acciaio inossidabile / Stainless steel
6	Guarnizione / Seal	NBR

Diagramma pressione temperatura / Pressure temperature diagram



Perdite di carico / Friction losses diagrams



Dimensioni e pesi / Dimensions and weights

Codice Code	Misura Size	DN	PN	Pressione apertura mbar Opening pressure mbar	Peso in kg. Weight in kg.	KV m³/h	Dimensioni in mm Dimensions in mm		
							Ø	B	C
H245009	2"	50	16	37.5 - 62.5	5,65	95	51	165	100
H245010	2" 1/2	65	16	31 - 63.5	7,85	140	63	185	120
H245011	3"	80	16	28 - 58	10,05	250	80	200	140
H245012	4"	100	16	32 - 61	13,25	355	100	220	170
H245013	5"	125	16	18 - 56	21,30	505	125	250	200
H245014	6"	150	16	17 - 51.5	29,15	640	150	285	230
H245016	8"	200	16	22 - 63	48,15	995	200	340	300
H245018	10"	250	16	21 - 68	82,00	1.750	250	405	370