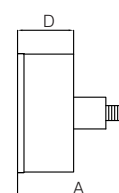
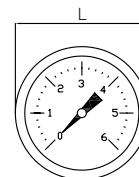
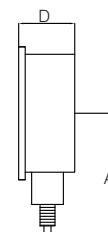
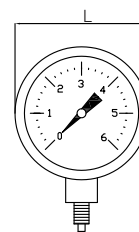


MANOMETRI / PRESSURE GAUGES / Ø 53

Manometri a secco /
Dry pressure gauges



Versione con
indicatore rosso /
Red index version



Modello / Model
Ø 53

Materiale cassa / Casing material
ABS

Attacco / Connection
Ottone / Brass

Caratteristiche tecniche / Construction features

- **Manometri a molla di Bourdon** / Bourdon spring pressure gauges
- **Misura** / Size
Ø 53
- **Doppia scala** / Double scale
bar / psi
- **Scale disponibili** / Available scales
0-6 / 10 / 16 bar

Componenti e materiali / Components and materials

Cassa / Casing	ABS nero / black
Meccanismo / Mechanism	Ottone / Brass
Attacco / Connection	Ottone (1/4" M gas) / Brass (1/4" M gas)
Vetro / Glass	Acrilico / Acrylic

Dimensioni e pesi / Dimensions and weights

Codice Code	Versione Type	Caratteristiche Features	Scala Scale		Peso in gr. Weight in gr.	Dimensioni in mm Dimensions in mm		
			bar	psi		A	L	D
600200	Ø 53	Attacco radiale Bottom connection	0 - 6	0 - 90	64	47	53	27
600201			0 - 10	0 - 150	64	47	53	27
600202			0 - 16	0 - 240	64	47	53	27
600250	Ø 53	Attacco posteriore Rear connection	0 - 6	0 - 90	68	47	53	27
600251			0 - 10	0 - 150	68	47	53	27
600252			0 - 16	0 - 240	68	47	53	27
600200IR	Ø 53 Indicatore rosso Red index	Attacco radiale Bottom connection	0 - 6	0 - 90	71	48	53	27
600201IR			0 - 10	0 - 150	71	48	53	27
600250IR	Ø 53 Indicatore rosso Red index	Attacco posteriore Rear connection	0 - 6	0 - 90	66	48	53	27
600251IR			0 - 10	0 - 150	66	48	53	27