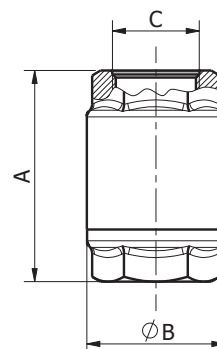
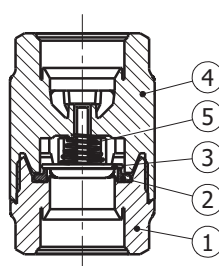


AMITA

**Valvole di ritegno
in plastica** / Plastic
check valves



Modello / Model
AMITA

Materiale / Material
Pa 66 - Aisi 316

Tenuta / Seal
NBR

DN
15 - 40

PN
6

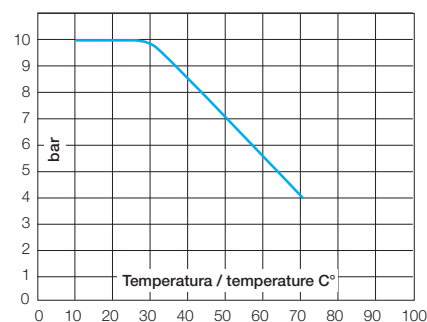
Caratteristiche tecniche / Construction features

- **Connessioni filettate femmina secondo /**
Threaded ends female according
UNI ISO 228/1
- **Pressione di apertura /** Opening pressure
Min. 0,025 - Max. 0,035 bar
- **Test idraulico aria compressa su ogni
valvola a /** Hydraulic test compressed air on
each valve at
0,2 bar
- **Pressione nominale di esercizio /** Nominal
working pressure
6 bar
- **Temperatura di esercizio /** Working
temperature
0°C - +70°C

Componenti e materiali / Components and materials

1	Corpo inferiore valvola / Lower valve body	Nylon 66 stabilizzato e fibre di vetro 30% / Stabilized nylon 66 and 30% fiber glass
2	Anello di tenuta Seal ring	NBR
3	Otturatore / Flow control disc	Acciaio inox / SS Aisi 316
4	Corpo superiore valvola / Upper valve body	Nylon 66 stabilizzato e fibre di vetro 30% / Stabilized nylon 66 and 30% fiber glass
5	Molla / Spring	Acciaio inox / SS Aisi 316

Diagramma pressione temperatura / Pressure temperature diagram



Dimensioni e pesi / Dimensions and weights

Codice Code	Misura Size	DN	PN	Peso in gr. Weight in gr.	KV m³/h	Dimensioni in mm Dimensions in mm		
						A	B	C
800050	1/2"	15	6	56	5,8	63	40	1/2" F
800051	3/4"	20	6	78	10,5	72	45	3/4" F
800052	1"	25	6	124	17,9	81	54	1" F
800053	1" 1/4	32	6	238	30,1	94	68	1" 1/4 F
800054	1" 1/2	40	6	305	39,2	104	79	1" 1/2 F

Perdite di carico / Friction losses diagrams

