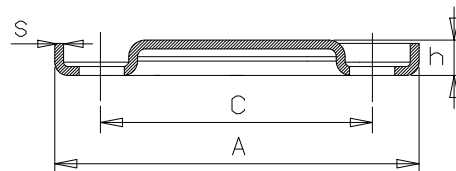


# FLANGE / FLANGES CIECHE / BLIND

**Flange PN 16 in acciaio  
inox stampato** / Pressed  
stainless steel PN 16  
flanges



**Modello / Model**

**CIECHE / BLIND**

**Materiale / Material**

Aisi 304

**DN**

25 – 100

**PN**

16

## Caratteristiche tecniche /

Construction features

- **Prodotte mediante deformazione a freddo di lamiera di acciaio inossidabile** / Manufactured by cold deformation of stainless steel sheet
- **Dimensioni secondo** / Dimensions according to EN 1092 /1 PN16
- **Fori ovali per facilitare l'assemblaggio** / Oval holes for easier assembling
- **Pressione nominale di esercizio** / Nominal working pressure 16 bar

**Su richiesta /**  
On request



**Acciaio inox Aisi 316 / SS Aisi 316**

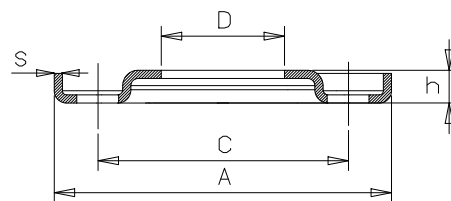
## Dimensioni e pesi /

Dimensions and weights

| Codice<br>Code | Misura<br>Size | DN  | PN | Peso<br>in kg.<br>Weight<br>in kg. | Dimensioni in mm<br>Dimensions in mm |     |    |   | N° fori<br>N. holes | Diametro fori<br>Diameter holes |
|----------------|----------------|-----|----|------------------------------------|--------------------------------------|-----|----|---|---------------------|---------------------------------|
|                |                |     |    |                                    | A                                    | C   | h  | S |                     |                                 |
| 200697C04ST    | 1"             | 25  | 16 | 0,33                               | 115                                  | 85  | 16 | 3 | 4                   | 14,5                            |
| 200698C04ST    | 1" 1/4         | 32  | 16 | 0,47                               | 140                                  | 100 | 16 | 3 | 4                   | 18                              |
| 200699C04ST    | 1" 1/2         | 40  | 16 | 0,53                               | 150                                  | 110 | 16 | 3 | 4                   | 18                              |
| 200700C04ST    | 2"             | 50  | 16 | 0,84                               | 165                                  | 125 | 16 | 4 | 4                   | 18                              |
| 200701C04ST    | 2" 1/2         | 65  | 16 | 1,03                               | 185                                  | 145 | 18 | 4 | 4                   | 18                              |
| 200702C04ST    | 3"             | 80  | 16 | 1,22                               | 200                                  | 160 | 18 | 4 | 8                   | 18                              |
| 200703C04ST    | 4"             | 100 | 16 | 1,75                               | 225                                  | 180 | 19 | 5 | 8                   | 18                              |

# FLANGE / FLANGES SCORREVOLI / LOOSE

**Flange scorrevoli PN 16  
in acciaio inox stampato /**  
Pressed stainless steel PN 16  
loose flanges



Modello / Model

**SCORREVOLI / LOOSE**

Materiale / Material

Aisi 304

DN

25 – 100

PN

16

## Caratteristiche tecniche /

Construction features

- **Prodotte mediante deformazione a freddo di lamiera di acciaio inossidabile /**  
Manufactured by cold deformation of stainless steel sheet
- **Dimensioni secondo /**  
Dimensions according to  
EN 1092 /1 PN16
- **Fori ovali per facilitare l'assemblaggio /**  
Oval holes for easier assembling
- **Pressione nominale di esercizio /** Nominal  
working pressure  
16 bar

Su richiesta /

On request



**Acciaio inox Aisi 316 /** SS Aisi 316

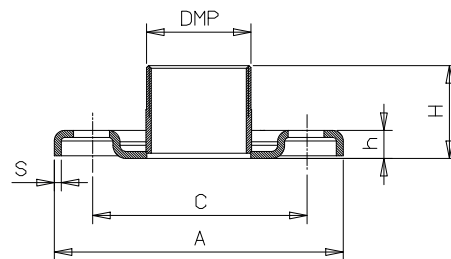
## Dimensioni e pesi /

Dimensions and weights

| Codice<br>Code | Misura<br>Size | DN  | PN | Peso<br>in kg.<br>Weight<br>in kg. | Dimensioni in mm<br>Dimensions in mm |     |     |    |   | N° fori<br>N. holes | Diametro fori<br>Diameter holes |
|----------------|----------------|-----|----|------------------------------------|--------------------------------------|-----|-----|----|---|---------------------|---------------------------------|
|                |                |     |    |                                    | A                                    | C   | D   | h  | S |                     |                                 |
| 5MO300/304     | 1"             | 25  | 16 | 0,30                               | 115                                  | 85  | 36  | 16 | 3 | 4                   | 14,5                            |
| 5MO301/304     | 1" 1/4         | 32  | 16 | 0,41                               | 140                                  | 100 | 46  | 16 | 3 | 4                   | 18                              |
| 5MO302/304     | 1" 1/2         | 40  | 16 | 0,46                               | 150                                  | 110 | 54  | 16 | 3 | 4                   | 18                              |
| 5MO303/304     | 2"             | 50  | 16 | 0,75                               | 165                                  | 125 | 65  | 16 | 4 | 4                   | 18                              |
| 5MO304/304     | 2" 1/2         | 65  | 16 | 0,87                               | 185                                  | 145 | 81  | 18 | 4 | 4                   | 18                              |
| 5MO305/304     | 3"             | 80  | 16 | 0,99                               | 200                                  | 160 | 94  | 18 | 4 | 8                   | 18                              |
| 5MO306/304     | 4"             | 100 | 16 | 1,31                               | 225                                  | 180 | 119 | 19 | 5 | 8                   | 18                              |

# FLANGE / FLANGES MASCHIO / MALE

**Flange PN 16 con tronchetto maschio saldato** / Pressed stainless steel PN 16 flanges with welded male nipple



Modello / Model

**MASCHIO / MALE**

Materiale / Material

Aisi 304

DN

25 – 100

PN

16

## Caratteristiche tecniche /

Construction features

- **Prodotte mediante deformazione a freddo di lamiera di acciaio inossidabile** / Manufactured by cold deformation of stainless steel sheet
- **Dimensioni secondo** / Dimensions according to EN 1092 /1 PN16
- **Filettatura controflange secondo** / Counterflanges threadings according to UNI ISO 228/1
- **Fori ovali per facilitare l'assemblaggio** / Oval holes for easier assembling
- **Pressione nominale di esercizio** / Nominal working pressure 16 bar

Su richiesta /

On request



Acciaio inox Aisi 316 / SS Aisi 316

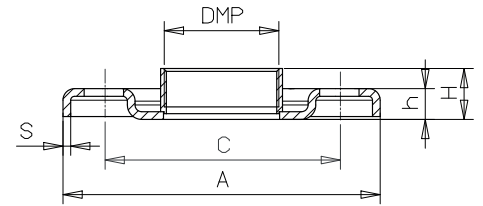
## Dimensioni e pesi /

Dimensions and weights

| Codice<br>Code | Misura<br>Size | DMP      | DN  | PN | Peso<br>in kg.<br>Weight<br>in kg. | Dimensioni in mm<br>Dimensions in mm |     |      |    |   | N° fori<br>N. holes | Diametro fori<br>Diameter holes |
|----------------|----------------|----------|-----|----|------------------------------------|--------------------------------------|-----|------|----|---|---------------------|---------------------------------|
|                |                |          |     |    |                                    | A                                    | C   | H    | h  | S |                     |                                 |
| 5MO320/304     | 1"             | 1" M     | 25  | 16 | 0,37                               | 115                                  | 85  | 36,5 | 16 | 3 | 4                   | 14,5                            |
| 5MO321/304     | 1" 1/4         | 1" 1/4 M | 32  | 16 | 0,53                               | 140                                  | 100 | 41,5 | 16 | 3 | 4                   | 18                              |
| 5MO322/304     | 1" 1/2         | 1" 1/2 M | 40  | 16 | 0,60                               | 150                                  | 110 | 46,5 | 16 | 3 | 4                   | 18                              |
| 5MO323/304     | 2"             | 2" M     | 50  | 16 | 0,94                               | 165                                  | 125 | 52,5 | 16 | 4 | 4                   | 18                              |
| 5MO324/304     | 2" 1/2         | 2" 1/2 M | 65  | 16 | 1,20                               | 185                                  | 145 | 62,5 | 18 | 4 | 4                   | 18                              |
| 5MO325/304     | 3"             | 3" M     | 80  | 16 | 1,45                               | 200                                  | 160 | 72,5 | 18 | 4 | 8                   | 18                              |
| 5MO326/304     | 4"             | 4" M     | 100 | 16 | 2,17                               | 225                                  | 180 | 83,5 | 19 | 5 | 8                   | 18                              |

# FLANGE / FLANGES FEMMINA / FEMALE

**Flange PN 16 con manicotto femmina saldato** / Pressed stainless steel PN16 flanges with welded female socket



Modello / Model

**FEMMINA / FEMALE**

Materiale / Material

Aisi 304 - Acciaio zincato / Zinc plated steel

DN

25 – 100

PN

16

## Caratteristiche tecniche / Construction features

- **Prodotte mediante deformazione a freddo di lamiera di acciaio inossidabile** / Manufactured by cold deformation of stainless steel sheet
- **Versioni in acciaio zincato prodotte mediante stampaggio a caldo** / Version in galvanized steel manufactured by hot forming
- **Dimensioni secondo** / Dimensions according to EN 1092 / 1 PN16
- **Filettatura controflange secondo** / Counterflanges threadings according to UNI ISO 228/1
- **Fori ovali per facilitare l'assemblaggio** / Oval holes for easier assembling
- **Pressione nominale di esercizio** / Nominal working pressure 16 bar

**Su richiesta /  
On request**



**Acciaio inox Aisi 316 / SS Aisi 316**

## Dimensioni e pesi / Dimensions and weights

| Codice<br>Code | Misura<br>Size | DMP      | Materiale<br>Material                       | DN | PN   | Peso<br>in kg.<br>Weight<br>in kg. | Dimensioni in mm<br>Dimensions in mm |      |      |    |   | N° fori<br>N. holes | Diametro fori<br>Diameter holes |
|----------------|----------------|----------|---------------------------------------------|----|------|------------------------------------|--------------------------------------|------|------|----|---|---------------------|---------------------------------|
|                |                |          |                                             |    |      |                                    | A                                    | C    | H    | h  | S |                     |                                 |
| 5MO340N/304    | 1"             | 1" F     | Aisi 304                                    | 25 | 16   | 0,32                               | 115                                  | 85   | 19   | 16 | 3 | 4                   | 14,5                            |
| 5MO341N/304    | 1" 1/4         | 1" 1/4 F |                                             | 32 | 16   | 0,46                               | 140                                  | 100  | 22   | 16 | 3 | 4                   | 18                              |
| 5MO342N/304    | 1" 1/2         | 1" 1/2 F |                                             | 40 | 16   | 0,53                               | 150                                  | 110  | 22   | 16 | 3 | 4                   | 18                              |
| 5MO343N/304    | 2"             | 2" F     |                                             | 50 | 16   | 0,80                               | 165                                  | 125  | 25,5 | 16 | 4 | 4                   | 18                              |
| 5MO344N/304    | 2" 1/2         | 2" 1/2 F |                                             | 65 | 16   | 1,24                               | 185                                  | 145  | 57,5 | 18 | 4 | 4                   | 18                              |
| 5MO345N/304    | 3"             | 3" F     |                                             | 80 | 16   | 1,48                               | 200                                  | 160  | 64,5 | 18 | 4 | 8                   | 18                              |
| 5MO346N/304    | 4"             | 4" F     | 100                                         | 16 | 2,23 | 225                                | 180                                  | 73,5 | 19   | 5  | 8 | 18                  |                                 |
| 5MO340N/ZNT    | 1"             | 1" F     | Acciaio<br>zincato /<br>Galvanized<br>steel | 25 | 16   | 0,44                               | 115                                  | 85   | 16   | 10 | 5 | 4                   | 14                              |
| 5MO341N/ZNT    | 1" 1/4         | 1" 1/4 F |                                             | 32 | 16   | 0,64                               | 140                                  | 100  | 16   | 13 | 5 | 4                   | 18                              |
| 5MO342N/ZNT    | 1" 1/2         | 1" 1/2 F |                                             | 40 | 16   | 0,76                               | 150                                  | 110  | 19   | 14 | 5 | 4                   | 18                              |
| 5MO343N/ZNT    | 2"             | 2" F     |                                             | 50 | 16   | 0,99                               | 165                                  | 125  | 24   | 16 | 5 | 4                   | 18                              |
| 5MO344N/ZNT    | 2" 1/2         | 2" 1/2 F |                                             | 65 | 16   | 1,23                               | 185                                  | 145  | 23   | 16 | 7 | 4                   | 18                              |
| 5MO345N/ZNT    | 3"             | 3" F     |                                             | 80 | 16   | 1,32                               | 200                                  | 160  | 27   | 17 | 8 | 8                   | 18                              |
| 5MO346N/ZNT    | 4"             | 4" F     | 100                                         | 16 | 1,59 | 225                                | 180                                  | 31   | 18   | 8  | 8 | 18                  |                                 |