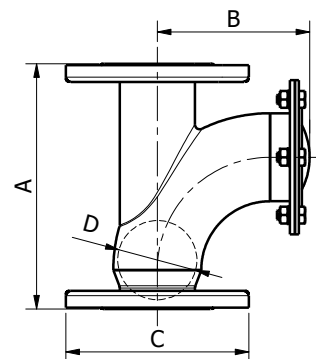
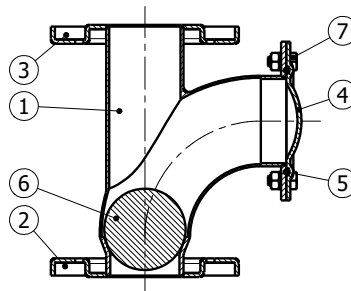


GLOVALVE / XL

Valvole di ritegno a palla in acciaio inox stampato
Ball check valves fabricated from pressed stainless steel



Modello / Model
GLOVALVE XL

Materiale / Material
Aisi 316

Tenuta / Seal
NBR

DN
65 – 100

PN
10

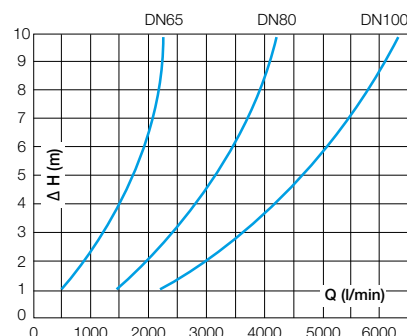
Caratteristiche tecniche / Construction features

- **Applicazioni: acque reflue, fluidi densi o carichi di elementi in sospensione** / Applications: dense and loaded liquids
- **Lavorazione acciaio inox stampato** / Manufacturing process pressed stainless steel
- **Trattamento superficiale sgrassaggio, decapaggio ed elettrolucidatura** / Surface treatment degreasing, pickling and electropolishing
- **Attacco flangiato in acciaio inox stampato con foratura secondo** / Flanged end from pressed stainless steel with holes according to UNI EN 1092-1 PN 16
- **Saldature a TIG senza apporto di materiale** / Welded joints TIG method without any additional material
- **Pressione nominale di esercizio** / Nominal working pressure
10 bar
- **Temperatura di esercizio** / Working temperature
0°C – +90°C NBR
- **Installazione: verticale e orizzontale** / Installation: vertical and horizontal

Componenti e materiali / Components and materials

1	Corpo / Body	1.4401 EN10088 (Aisi 316)
2	Flangia / Flange	1.4401 EN10088 (Aisi 316)
3	Flangia / Flange	1.4401 EN10088 (Aisi 316)
4	Coperchio / Cap	1.4401 EN10088 (Aisi 316)
5	Guarnizione / Seal ring	FPM
6	Palla / Ball	Acciaio + NBR or FPM / Iron + NBR or FPM
7	Dadi e viti / Screws and bolts	1.4401 EN10088 (Aisi 316)

Perdite di carico / Friction losses diagrams



Dimensioni e pesi / Dimensions and weights

Codice Code	Misura Size	DN	PN	Peso in kg. Weight in kg.	KV m ³ /h	Dimensioni in mm Dimensions in mm					
						A	B	C (UNI EN 1092-1)	D (sfera / ball)	N° fori N. holes	Diam. fori Diam. holes
900240	2"1/2	65	10	5,15	136	250	251	DN 65	80	4	18
900250	3"	80	10	6,98	267	308	297	DN 80	95	8	18
900260	4"	100	10	11,10	396	374	347	DN 100	118	8	18