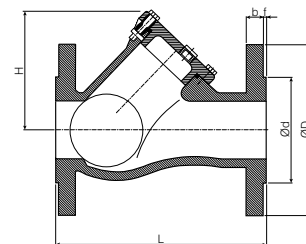
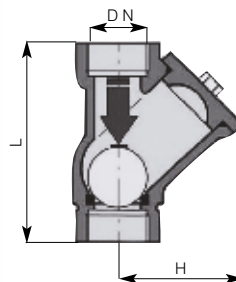


# N6VRFL

**Valvole ritegno a palla in ghisa /**  
Cast iron ball check valves



**Modello / Model**  
N6VRFL

**Materiale / Material**  
Ghisa / Cast iron

**Tenuta / Seal**  
NBR

**DN**  
32 – 150

**PN**  
10

## Caratteristiche tecniche /

### Construction features

- **Connessioni filettate femmina secondo /**  
Threaded ends female according to  
UNI ISO 228/1
- **Connessioni flangiate con foratura secondo /**  
Flanged ends according to  
UNI EN 1092-2 PN 10/16
- **Pressione nominale di esercizio /**  
Nominal working pressure  
10 bar
- **Temperatura di esercizio /** Working pressure  
-10°C – +70°C
- **Applicazioni acque reflue, fluidi densi o carichi di elementi in sospensione /**  
Applications dense and loaded liquids
- **Installazione verticale e orizzontale /**  
Installation vertical and horizontal

## Componenti e materiali /

### Components and materials

|  |  |
|--|--|
| <b>Corpo / Body</b>                                    | Ghisa sferoidale GJS -400-15 / GJS -400-15 ductile iron  |
| <b>Trattamento superficiale /</b><br>Surface treatment | Verniciatura epossidica / Epoxy coated   |
| <b>Dadi e viti /</b> Nuts and bolts                    | Acciaio inox / SS Aisi 304   |
| <b>Sfera /</b> Ball                                    | Alluminio (ghisa per versione flangiata) con rivestimento in NBR /<br>Aluminum (cast iron for flanged version) NBR rubber coated |

## Dimensioni e pesi /

### Dimensions and weights

| Codice<br>Code | Versione<br>Type        | Misura<br>Size | DN  | PN | Peso<br>in kg.<br>Weight<br>in kg. | KV<br>m³/h | Dimensioni in mm<br>Dimensions in mm |     |    |   |     |     | Flange<br>Flanges   |                     |                       |
|----------------|-------------------------|----------------|-----|----|------------------------------------|------------|--------------------------------------|-----|----|---|-----|-----|---------------------|---------------------|-----------------------|
|                |                         |                |     |    |                                    |            | D                                    | d   | b  | f | H   | L   | N. Fori<br>N. holes | D. Fori<br>D. holes | Interasse<br>Interaxe |
| N6VRFL005      | Filettata /<br>Threaded | 1" 1/4         | 32  | 10 | 2,1                                | 29,4       | -                                    | -   | -  | - | 80  | 140 | -                   | -                   | -                     |
| N6VRFL010      |                         | 1" 1/2         | 40  | 10 | 2,3                                | 57,8       | -                                    | -   | -  | - | 82  | 140 | -                   | -                   | -                     |
| N6VRFL020      |                         | 2"             | 50  | 10 | 3,1                                | 78,3       | -                                    | -   | -  | - | 90  | 180 | -                   | -                   | -                     |
| N6VRFL030      |                         | 2" 1/2         | 65  | 10 | 6,7                                | 110,4      | -                                    | -   | -  | - | 130 | 250 | -                   | -                   | -                     |
| N6VRFL050      | Flangiata /<br>Flanged  | 2" 1/2         | 65  | 10 | 11,5                               | 136        | 185                                  | 122 | 15 | 3 | 130 | 240 | 4                   | 18                  | 145                   |
| N6VRFL060      |                         | 3"             | 80  | 10 | 15,5                               | 267        | 200                                  | 134 | 18 | 3 | 150 | 260 | 8                   | 18                  | 160                   |
| N6VRFL070      |                         | 4"             | 100 | 10 | 22,5                               | 396        | 220                                  | 158 | 18 | 3 | 190 | 300 | 8                   | 18                  | 180                   |
| N6VRFL075      |                         | 5"             | 125 | 10 | 33                                 | 671        | 250                                  | 184 | 18 | 3 | 215 | 350 | 8                   | 18                  | 210                   |
| N6VRFL080      |                         | 6"             | 150 | 10 | 45,5                               | 890        | 285                                  | 212 | 22 | 3 | 240 | 400 | 8                   | 22                  | 240                   |