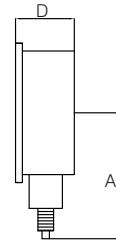
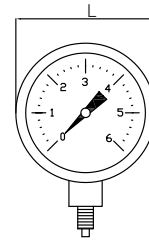


MANOMETER / PRESSURE GAUGES / Ø 100

Manometer mit Glycerinfüllung /
Glycerin - filled pressure gauges



Modell / Model
Ø 100

Werkstoff Gehäuse / Casing material
AISI 304

Anschluss / Connection
AISI 304

Technische Merkmale / Construction features

- **Glycerinmanometer mit Bourdonfeder** /
Glycerin - filled pressure gauges - Bourdon
spring type
- **Größe** / Size
Ø 100
- **Verfügbare Skalenbereiche** / Available
scales
0-16 / 25 / 100 bar

Abmessungen und Gewichte / Dimensions and weights

| Code Code | Merkmale Features | Skala Scale | | Gewicht in g Weight in gr. | Maße in mm Dimensions in mm | | |
|--------------|---|----------------|----------|-------------------------------------|--------------------------------|-----|----|
| | | bar | psi | | A | L | D |
| 600400 | Radialanschluss Bottom connection | 0 – 16 | 0 – 240 | 561 | 85 | 100 | 36 |
| 600401 | | 0 – 25 | 0 – 400 | 561 | 85 | 100 | 36 |
| 600404 | | 0 – 100 | 0 – 1500 | 561 | 85 | 100 | 36 |

Bauteile und Werkstoffe / Components and materials

| | |
|----------------------------------|---|
| Gehäuse / Casing | Edelstahl / SS AISI 304 |
| Mechanik / Mechanism | Edelstahl / SS AISI 304 |
| Anschluss / Connection | Edelstahl AISI 304 (1/2" M) / SS AISI 304 (1/2" M gas) |
| Glas / Glass | Polycarbonat / Polycarbonate |