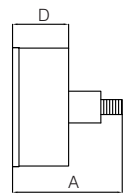
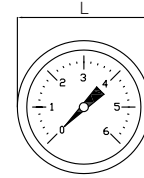
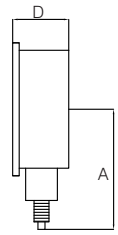
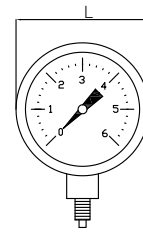


MANOMETER / PRESSURE GAUGES / Ø 53

Trockenmanometer /
Dry pressure gauges



Version mit rotem
Zeiger /
Red index version



Modell / Model
Ø 53

Werkstoff Gehäuse / Casing material
ABS

Anschluss / Connection
Messing / Brass

Technische Merkmale / Construction features

- **Manometer mit Bourdonfeder** / Bourdon spring pressure gauges
- **Größe** / Size
Ø 53
- **Doppelskala** / Double scale
bar / psi
- **Verfügbare Skalenbereiche** / Available scales
0-6 / 10 / 16 bar

Bauteile und Werkstoffe / Components and materials

Gehäuse / Casing	ABS schwarz / black
Mechanik / Mechanism	Messing / Brass
Anschluss / Connection	Messing (1/4" M) / Brass (1/4" M gas)
Glas / Glass	Acryl / Acrylic

Abmessungen und Gewichte / Dimensions and weights

Code Code	Version Type	Merkmale Features	Skala Scale		Gewicht in g Weight in gr.	Maße in mm Dimensions in mm		
			bar	psi		A	L	D
600200	Ø 53	Radialanschluss Bottom connection	0 - 6	0 - 90	64	47	53	27
600201			0 - 10	0 - 150	64	47	53	27
600202			0 - 16	0 - 240	64	47	53	27
600250	Ø 53	Anschluss hinten Rear connection	0 - 6	0 - 90	68	47	53	27
600251			0 - 10	0 - 150	68	47	53	27
600252			0 - 16	0 - 240	68	47	53	27
600200IR	Ø 53 Roter Zeiger	Radialanschluss Bottom connection	0 - 6	0 - 90	71	48	53	27
600201IR	Red index		0 - 10	0 - 150	71	48	53	27
600250IR	Ø 53 Roter Zeiger	Anschluss hinten Rear connection	0 - 6	0 - 90	66	48	53	27
600251IR	Red index		0 - 10	0 - 150	66	48	53	27